

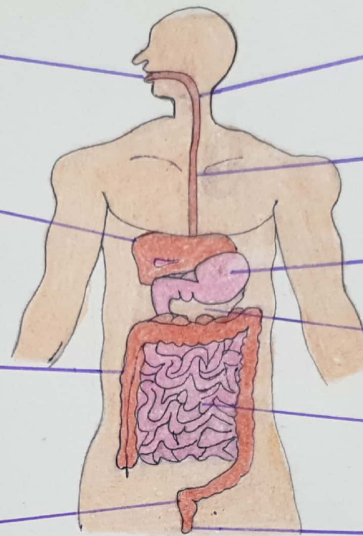
HUMAN DIGESTIVE AND EXCRETORY SYSTEM

Mouth → The mouth is the first part of our alimentary canal, which is also called Oral Cavity

Liver → It is the largest organ of the body which secretes a digestive juice called bile, that helps in digestion of fats.

Large Intestine → Large intestine is the last part of the alimentary canal that connects to the rectum and anus.

Rectum → In rectum, the undigested food in form of faeces is stored.



Organs of Digestive System

Pharynx → The pharynx is the part of the throat immediately below the mouth.

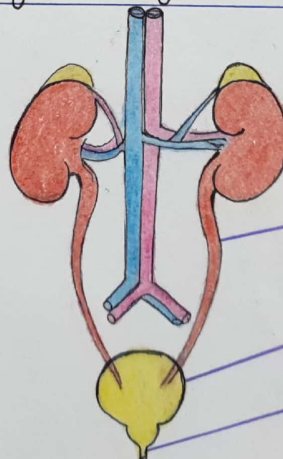
Food pipe/Oesophagus → The part next to the pharynx is called the oesophagus or the food pipe.

Stomach → The oesophagus leads to the stomach, which is a hollow container that holds food.

Pancreas → Pancreas secretes digestive juice that helps in digestion.

Small Intestine → Next to stomach, small intestine, where total digestion process is completed.

Anus → It is an opening through which wastes are discharged out.



Human Excretory System

Kidney

Ureter

Urinary bladder

Urethra

class - IV