

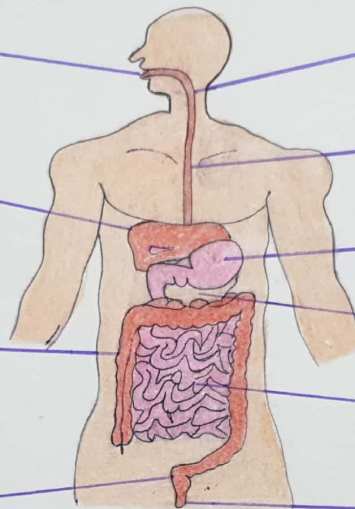
# HUMAN DIGESTIVE AND EXCRETORY SYSTEM

**Mouth** → The mouth is the first part of our alimentary canal, which is also called Oral Cavity

**Liver** → It is the largest organ of the body which secretes a digestive juice called bile, that helps in digestion of fats.

**Large Intestine** → Large intestine is the last part of the alimentary canal that connects to the rectum and anus.

**Rectum** → In rectum, the undigested food in form of faeces is stored.



Organs of Digestive System

**Pharynx** → The pharynx is the part of the throat immediately below the mouth.

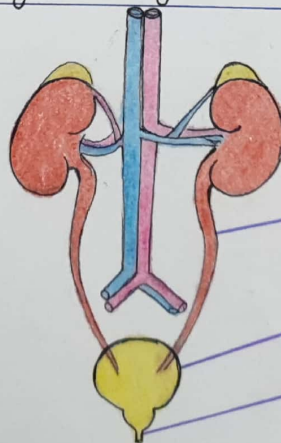
**Food pipe/Oesophagus** → The part next to the pharynx is called the oesophagus or the food pipe

**Stomach** → The oesophagus leads to the stomach, which is a hollow container that holds food.

**Pancreas** → Pancreas secretes digestive juice that helps in digestion

**Small Intestine** → Next to stomach, small intestine, where total digestion process is completed.

**Anus** → It is an opening through which wastes are discharged out



Human Excretory System

Kidney

ureter

Urinary bladder

urethra

class - IV

Usharani Nanda